



# Valve 2/2 way N.C. - flow direction below seat - angle seat pilot valve pneumatically actuated

21IA4T15GC2  
÷  
21IA9T50GC2

## PRESENTATION:

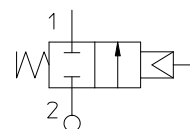
- High flow rate thanks to the body with angle seat configuration
- Anti waterhammer functioning with entry below seat.
- Pneumatic controlled valve with stainless steel body corrosion resistant
- Pneumatic actuator (360° rotation)
- Positioning shutter to guaranty the best seal
- Optical position indicator
- They can be used with back pressure for gaseous (the back pressure must not pass the functioning max pressure - see the MOPD chart)
- Selftrimming packing gland maintenance free
- The valve can be settled up in all positions.

**USE:** Automation, Heating, Water, Overheated water, Steam (180°C), Aggressive and food fluids

**PIPES:** G 1/2 - G 2

## VALVE FEATURES:

Fluid Temperature	- 10°C + 180°C
Environment temperature	- 10°C + 60°C
Material	Stainless steel AISI series 316
Seal	PTFE
Packing gland	PTFE, FKM



## PILOT ACTUATOR FEATURES:

Fluid	Dry Air or lubricated, gas and neutral fluids
Fluid Temperature	max + 60°C
Body	Polyamide 66 with 30% glass fibre
Gaskets	NBR
Actuator	Ø 70

Pipe ISO 228/1	Code	Ø mm	Kv l/mn	Actuator pilot pressure (bar)		Differential pressure (bar)		Max. allowable pressure PS (bar)	Weight Kg
				min	max	min	max		
G 1/2	21IA4T15GC2	15	80	4	10	0	16	40	1,4
G 3/4	21IA5T20GC2	20	150				10		1,5
G 1	21IA6T25GC2	25	190				10		1,8
G 1 1/4	21IA7T32GC2	32	340				7	25	2,4
G1 1/2	21IA8T40GC2	40	430				4,5		2,7
G 2	21IA9T50GC2	50	620				3	16	3,9



**CE Approval**

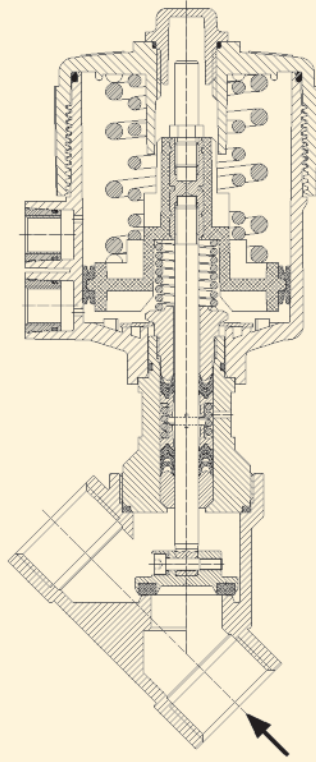
(Pressure Equipment Directive 97/23/CE)

for S.V. 21IA7 ÷ 21IA9

## Note

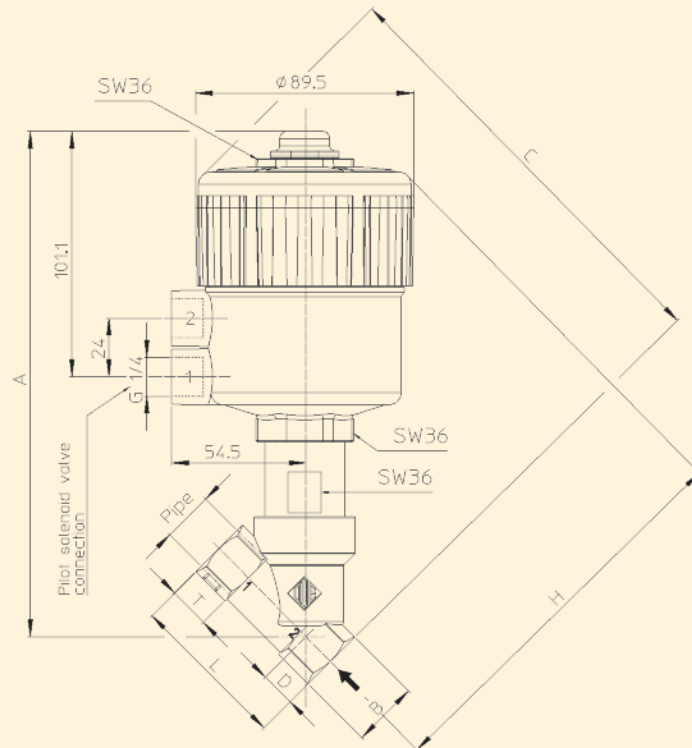
Available on request pilot Valve 31A2AV20+BDA (see catalogue page)  
Together with male thread nipple male G 1/4 - G 1/4  
Material compatibility with the fluids to be checked.

The "ODE" reserves the right to carry out technical and aesthetic modifications without prior notification.



**DIMENSIONS:**

Pipe ISO 228/1	A mm	B mm	C mm	D mm	E mm	H mm	L mm	T mm
G 1/2	206,8	SW 27	178,7	15,4	SW 30	163,3	65	17
G 3/4	211,7	SW 32	188,6	21,9	SW 36	166,7	75,5	19
G 1	220,1	SW 41	197,8	25,1	SW 36	172,7	90	21
G 1 1/4	235,9	SW 50	212,3	28,5	SW 41	183,8	110	24
G 1 1/2	238,9	SW 55	217,0	31,0	SW 41	186	122	25,2
G 2	247,8	SW 70	229,7	37,5	SW 41	192,2	151	28,5





# Valve 2/2 way N.O. - flow direction below seat - angle seat pilot valve pneumatically actuated

21IA4T15GA2  
÷  
21IA9T50GA2

## PRESENTATION:

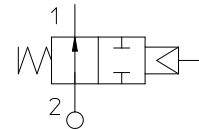
- High flow rate thanks to the body with angle seat configuration
- Anti waterhammer functioning with entry below seat.
- Pneumatic controlled valve with stainless steel body corrosion resistant
- Pneumatic actuator (360° rotation)
- Positioning shutter to guaranty the best seal
- Optical position indicator
- They can be used with back pressure for gaseous (the back pressure must not pass the functioning max pressure - see graphyc)
- Selftrimming packing gland maintenance free
- The valve can be settled up in all positions.

**USE:** Automation, Heating, Water, Overheated water, Steam (180°C), Aggressive and food fluids

**PIPES:** G 1/2 - G 2

## VALVE FEATURES:

Fluid Temperature - 10°C + 180°C  
 Environment temperature - 10°C + 60°C  
 Material Stainless steel AISI series 316  
 Seal PTFE  
 Packing gland PTFE, FKM



## PILOT ACTUATOR FEATURES:

Fluid Dry Air or lubricated, gas and neutral fluids  
 Fluid Temperature max + 60°C  
 Body Polyamide 66 with 30% glass fibre  
 Gaskets NBR  
 Actuator Ø 70

Pipe ISO 228/1	Code	Ø mm	Kv l/mn	Actuator pilot pressure (bar)		Differential pressure (bar)		Max. allowable pressure PS (bar)	Weight Kg
				min	max	min	max		
G 1/2	21IA4T15GA2	15	80	1,5	10	0	(See graphyc)	40	1,2
G 3/4	21IA5T20GA2	20	150						1,3
G 1	21IA6T25GA2	25	190						1,6
G 1 1/4	21IA7T32GA2	32	340					25	2,2
G1 1/2	21IA8T40GA2	40	430						2,5
G 2	21IA9T50GA2	50	620						3,7
								16	

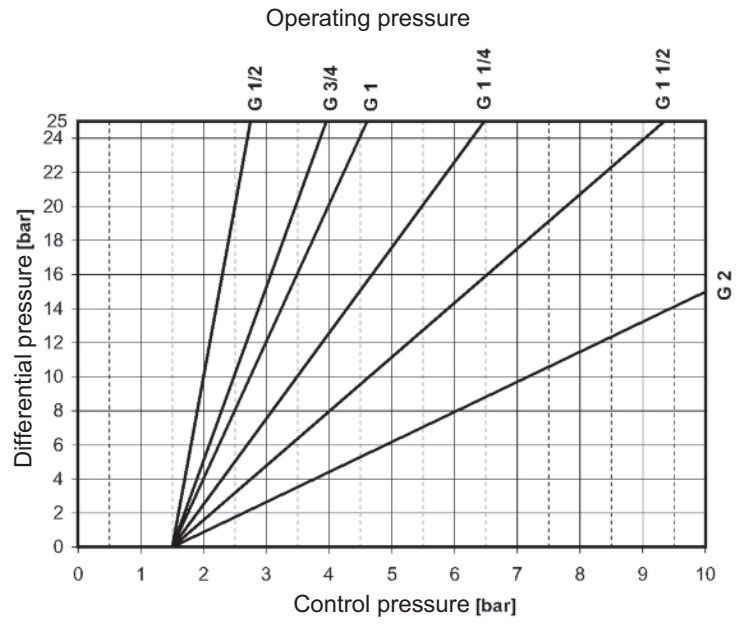
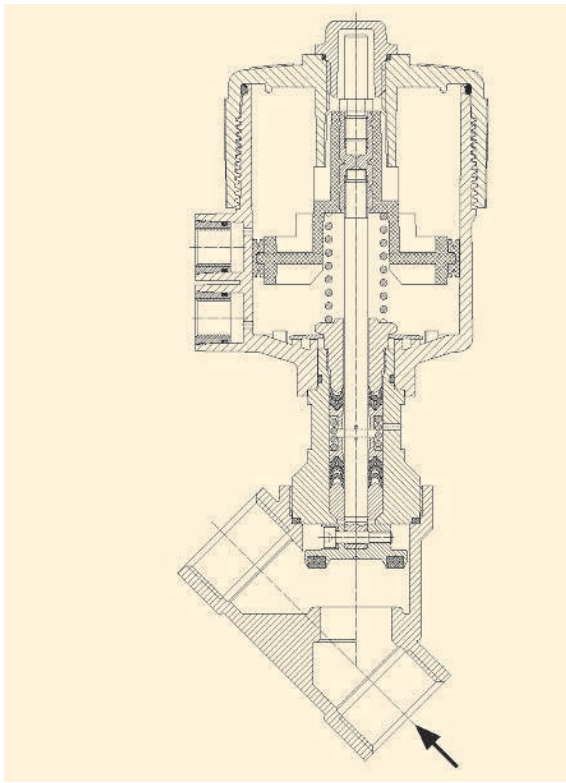


**CE Approval**  
 (Pressure Equipment Directive 97/23/CE)  
 for S.V. 21IA7 ÷ 21IA9

## Note

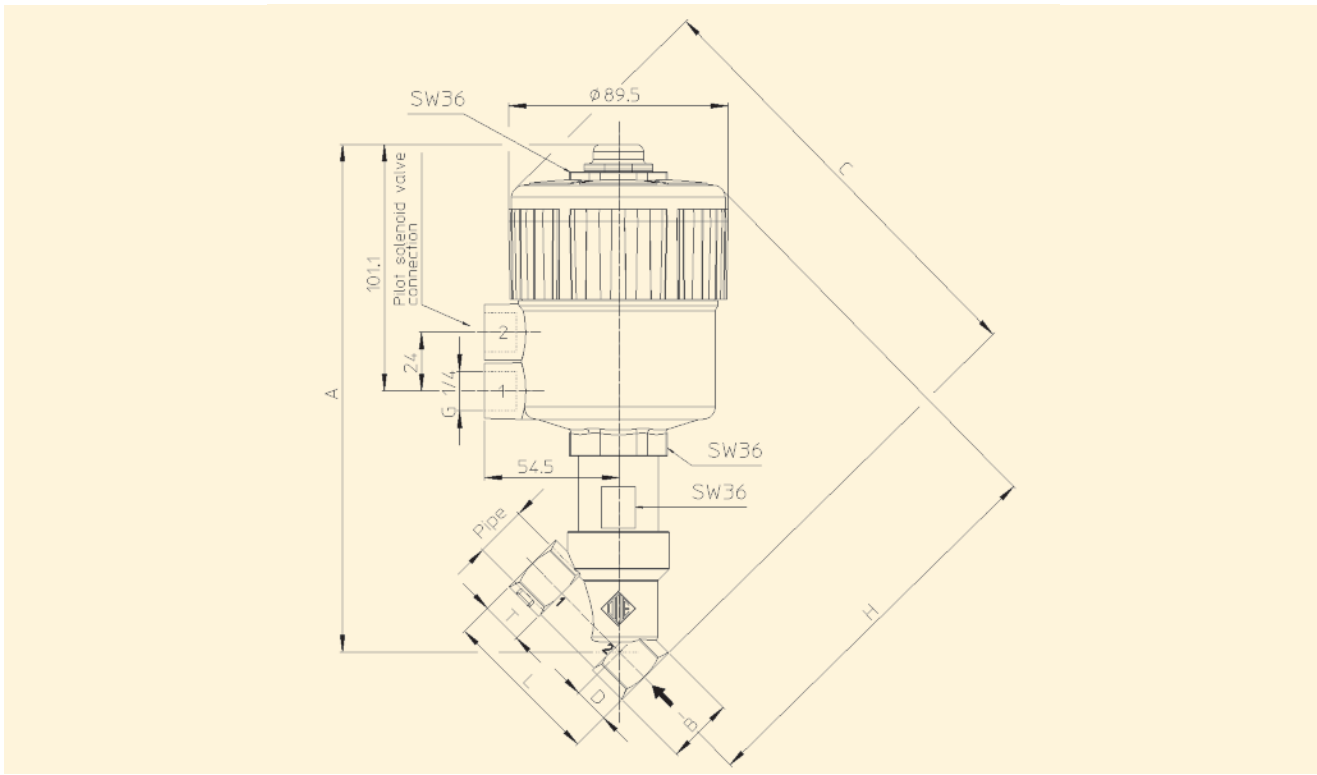
Available on request pilot Valve 31A2AV20+BDA (see catalogue page)  
 Together with male thread nipple male G 1/4 - G 1/4  
 Material compatibility with the fluids to be checked.

The "ODE" reserves the right to carry out technical and aesthetic modifications without prior notification.



### DIMENSIONS:

Pipe ISO 228/1	A mm	B mm	C mm	D mm	E mm	H mm	L mm	T mm
G 1/2	206,8	SW 27	178,7	15,4	SW 30	163,3	65	17
G 3/4	211,7	SW 32	188,6	21,9	SW 36	166,7	75,5	19
G 1	220,1	SW 41	197,8	25,1	SW 36	172,7	90	21
G 1 1/4	235,9	SW 50	212,3	28,5	SW 41	183,8	110	24
G 1 1/2	238,9	SW 55	217,0	31,0	SW 41	186	122	25,2
G 2	247,8	SW 70	229,7	37,5	SW 41	192,2	151	28,5





# Valve 2/2 way - angle seat/process valve Normally Closed - Flow direction below the seat - pneumatically operated

21IA4T15GC2-H  
÷  
21IA9T50GC2-H

## PRESENTATION:

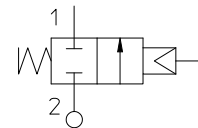
- High flow rate due to the angle seat configuration.
- Anti-water hammer feature with the fluid entry below the seat.
- Electrical operation is easy with the addition of a solenoid pilot.
- Stainless steel body and corrosion resistant actuator.
- The pneumatic actuator can be rotated through 360 degrees.
- Optical position indicator.
- Internal seals are self adjusting for long life.
- Easily convertible from N.C. to N.O. or double acting.
- Universal mounting - any mounting orientation is acceptable.

**USE:** Automation, Heating, Water, Hot water, Steam (180°C), Aggressive and food fluids

**PIPES:** G 1/2 - G 2

## VALVE FEATURES:

Fluid Temperature	- 10°C + 180°C
Ambient temperature	- 10°C + 60°C
Material	Stainless steel AISI series 316
Seal	PTFE
Packing gland	PTFE, FKM



## PILOT ACTUATOR FEATURES:

Fluid	Dry Air or lubricated, gas and neutral fluids
Fluid Temperature	max + 60°C
Body	Polyamide 66 with 30% glass fibre
Gaskets	NBR
Actuator	Ø 70

Pipe ISO 228/1	Code	Ø mm	Kv l/mn	Actuator pilot pressure (bar)		Differential pressure (bar)		Max. allowable pressure PS (bar)	Weight Kg
				min	max	min	max		
G 1/2	21IA4T15GC2-H	15	80	5	10	0	35	40	1,4
G 3/4	21IA5T20GC2-H	20	150				25		1,5
G 1	21IA6T25GC2-H	25	190				20		1,8
G 1 1/4	21IA7T32GC2-H	32	340				13	25	2,4
G1 1/2	21IA8T40GC2-H	40	430				8		2,7
G 2	21IA9T50GC2-H	50	620				5,5	16	3,9



**CE Approval**

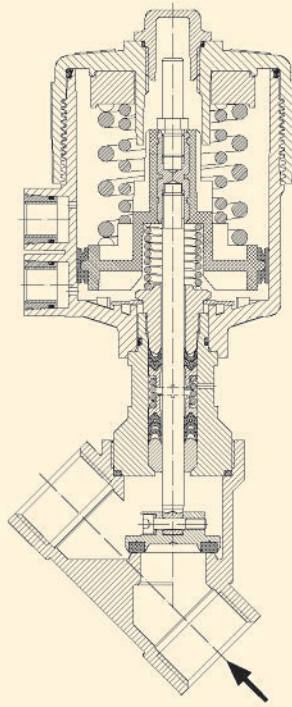
(Pressure Equipment Directive 97/23/CE)

for S.V. 21IA7 ÷ 21IA9

## Note

Available on request pilot Valve 31A2AV20+BDA (see catalogue page)  
Together with male thread nipple male G 1/4 - G 1/4  
Material compatibility with the fluids to be checked.

The "ODE" reserves the right to carry out technical and aesthetic modifications without prior notification.



**DIMENSIONS:**

Pipe ISO 228/1	A mm	B mm	C mm	D mm	H mm	L mm	T mm
G 1/2	206,8	SW 27	178,7	15,4	163,3	65	17
G 3/4	211,7	SW 32	188,6	21,9	166,7	75,5	19
G 1	220,1	SW 41	197,8	25,1	172,7	90	21
G 1 1/4	235,9	SW 50	212,3	28,5	183,8	110	24
G 1 1/2	238,9	SW 55	217,0	31,0	186	122	25,2
G 2	247,8	SW 70	229,7	37,5	192,2	151	28,5

